



Accessible Vans & MOBILITY

The *Mobility Minute*

Early Fall 2007



NEW JERSEY:

2303 Wallace Boulevard
Cinnaminson, New Jersey 08077
856-829-9449
Fax 856-829-4402
Rentals 800-862-7475

5105 Route 33/34 (Wall)
Farmingdale, New Jersey 07727
732-919-1444
Fax 732-919-0256
800-221-0034

82 Midland Avenue
Saddle Brook, New Jersey 07663
973-546-1900
Fax 973-546-1706
888-467-4376

NEW YORK:

500 Central Avenue
Bethpage, New York 11714
516-938-5207
Fax 516-938-5263
866-524-8267

501 Concord Avenue
Mamaroneck, New York 10543
914-835-8267
Fax 914-835-8279
866-999-8268

PENNSYLVANIA:

925 South Trooper Road
Norristown, Pennsylvania 19403
610-666-9100
Fax 610-666-9102
800-784-8267
Rentals 800-862-7475

6475 Ruch Road
Bethlehem, Pennsylvania 18017
610-837-0707
Fax 610-837-4933
888-837-6630
Rentals 800-862-7475

AVM Offers a Wide Variety of Lowered-Floor Accessible Vehicle Options for You!

If you're looking for a new lowered-floor accessible vehicle, Accessible Vans & Mobility (AVM) offers a wide-variety of options; including the Entervan and Rampvan from BraunAbility. BraunAbility carries an extensive line of options, with vans from three major vehicle manufacturers:

■ **Chrysler / Dodge:** Chrysler/Dodge vans continue to be America's best-selling minivans and AVM has an extensive selection of colors and styles in inventory, already converted and ready to go! Most models include a power rear hatch, and many even include the luxury of built-in DVD systems and moonroofs! In addition to converting new 2007 Chrysler and Dodge models,



BraunAbility and AVM also offer the cost-efficient option of building a brand-new conversion on a pre-owned vehicle. AVM obtains quality pre-owned vans with low mileage, and then builds brand-new conversions onto them. Doing this means the vehicle has all new carpet and flooring, yet you're

saving thousands of dollars by starting with a pre-owned vehicle. Chrysler/Dodge also offers a 100,000 mile power train warranty on all of their 2006, 2007 and 2008 minivans.

■ **General Motors:** The GM Chevy Uplander Entervan is one of the most spacious conversions on the market. It offers the most headroom, plus the option of either an in-floor or foldout ramp. Best of all, with a GM conversion you get the piece o mind of the OnStar Communication system. The OnStar service is provided to mobility customers at no charge for three years.



■ **Toyota:** BraunAbility is the exclusive partner of Toyota, and together they offer the Toyota Sienna Rampvan. The Sienna is consistently rated the most reliable minivan by Consumer Reports, and adding the Rampvan conversion makes it both luxurious and accessible. With the Sienna, you also have the option of either an in-floor or foldout ramp. We invite you to speak to an AVM Sales Representative to confirm their current inventory of available Toyota colors and options.



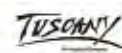
Regardless of the type of vehicle you select, a new conversion is easily within your reach with our flexible financing options. Plus, we always recommend that you check with your local AVM Sales Representative about current rebate programs, which make your vehicle purchase even more affordable. For more information on these or any other lowered-floor accessible vehicles, please contact an AVM Sales Representative today.

Special thanks to Cyndi Garnett, of the Braun Corporation Marketing Department, for assistance both with the writing and the photographs for this article.

In this issue...

Rentals, New 800 Number, 24 Hour Emergency Service	2	Vehicle Specials, On the Road With AVM, Cinnaminson Fall Event	6
Prevent Repair Costs, Insurance: Are You Covered?	3	Commercial Vehicles	7
Ask Pete Zarba, Spinal Cord Injury Kayaking, Ms. Wheelchair NJ	4	Great Savings Coupons	8
Spotlight On: Katie Samson Foundation	5		

www.AVMVANS.com
800-850-VANS (8267)



AVM Now Offers Accessible Vehicle Rentals at All Seven of Our Locations

All seven AVM locations are excited to announce that they have accessible vehicles available for rental, either on a daily, weekly, or monthly basis. Accessible vehicle rentals can be used to accommodate the special needs of a visitor, fill a gap during a service repair, to attend a special event, or even to take an extended trip. Rentals are also a great way to “try-before-you-buy” an accessible vehicle. AVM offers a complete fleet of lowered floor minivans as well as full-size vans for rental. Our rates are extremely competitive and our service can't be beat!



Prices may vary by location. Convenient pick-up and delivery, including airport service is available. Call for pricing. Significant discounts apply to longer term rentals. Excess mileage charge: \$.25 per mile. Prices do not include applicable Passenger Vehicle Sales Tax. Prices subject to change without notice. Renters must be 25 years of age with a valid driver's license and must supply proof of insurance that extends to rental vehicles.

Although actual prices vary by location, our typical rates are:

Daily: \$125.00 for one day with 100 free miles
 \$110.00 per day (2 days) with 200 free miles
 \$ 99.00 per day (3-6 days) with 100 free miles/daily

Weekly: \$630.00 per week with 700 free miles

Monthly: \$1,895.00 per month with 2,000 free miles.

Check with your nearest AVM location for information on rental promotions and specials!

AVM Introduces a New Company-Wide, Toll-Free Number For Your Convenience!

800-850-VANS

AVM is excited to introduce their new, company-wide toll-free 800# ... 800-850-VANS (8267). When you dial this number your call will automatically be routed to the AVM location closest to you!

Of course, you can also continue to utilize the individual 800#s, as well as the local numbers, for each of our locations. For a complete listing of AVM phone numbers, please refer to the cover of this newsletter.

At AVM, we are constantly striving to provide you with the highest level of quality and convenience!

CAUTION! Before you Consider Buying Mobility Equipment Online – READ THIS!

The National Mobility Equipment Dealers Association (NMEDA) cautions all consumers to do careful research and consider the potential risks involved in buying mobility equipment online. You may be placing either yourself or a loved one at risk as a result of incorrectly selected, poorly-fitted, or improperly installed equipment. NMEDA offers a comprehensive online-purchasing reference guide on their website; www.nmeda.org. AVM highly recommends all consumers read the NMEDA guide before making any buying decisions. AVM also recommends that consumers purchase in-person from a NMEDA, QAP-accredited mobility dealer, and that they use the Internet for research and reference purposes only.

Just a Reminder

Should You Ever Need It – 24 Hour Emergency Service is Available at All AVM Service Locations!

We've mentioned it in the past – but felt it was important to mention again – for your safety and peace of mind! AVM offers its customers whose vehicles break down outside of normal business hours, the option of contacting us to speak with a service technician. We can also provide you a ride home and arrange for towing and trailering if needed. Your vehicle will then be scheduled for servicing during normal business hours. Standard charges will apply.

If you need to reach one of our locations for emergency service, please dial that location's regular phone number (listed on the front cover of this newsletter).

The voice recording at each location will prompt you on how to contact a technician for emergency assistance.

Standard charges will apply for towing and trailering & an hourly labor charge will also apply. Please contact an AVM representative for more information.

Protect Your Investment . . . Maintain Your Accessible Vehicle Regularly to Prevent Repair Costs Down The Road . . .

You've made an investment with the purchase of your accessible vehicle. Be sure to keep it running smoothly and prevent costly repairs down the road, by servicing it on a regular basis.

To keep your vehicle running smoothly, AVM, in conjunction with the Braun Corporation, recommends the following service checks and procedures be done every 6 months or 6,000 miles.



■ Ramp System

- Clean and lube ramp hinge
- Check tightness of ramp hinge bolts
- Adjust ramp chain (chain should be snug with ramp folded)
- Lube ramp pivot pins and bushing
- Inspect and lube ramp drive arm (in-floor ramps)
- Operate ramp to ensure proper stowed/deployed switch adjustment
- Verify manual operation of ramp

■ Door System

- Clean door track and ensure drain hole is free of debris
- Check door alignment to ensure door gaps are consistent and even
- Inspect sliding door harness for damage and proper alignment
- Inspect and lube door rollers
- Inspect door operator cable
- Inspect door full open switch adjustment

■ Kneel System

- Clean and lube kneel chain
- Inspect and lube kneel rollers
- Inspect kneel raised/lowered switches
- Check manual override of kneel actuator

(Special thanks to Cyndi Garnett, of the Braun Corporation Marketing Department for assistance with the writing of this article.)

■ General Maintenance

- Verify battery voltage
- Check and adjust tire pressure
- Verify operation of conversion with all switches and remote

Please contact your local AVM Service Department today to make a service/maintenance appointment.

Insurance for Your Accessible Vehicle: Are You Covered?



State Farm Agent
Mark Ullmann

When customers rent accessible vehicles from AVM, our procedures require us to verify their insurance coverage in order to ensure that it applies to our rental and that it is adequate. Alarmingly, in speaking with insurance agents, we have found numerous situations where customers were carrying far less coverage than they realized. Sometimes, it could be attributed to clerical errors or sometimes a simple misunderstanding – yet regardless, it was a big surprise when we brought it to their attention.

To verify our findings, we contacted State Farm Agent Mark Ullmann and asked him if this was an accurate picture of the population as a whole. YES was his answer!!! The following is his advice to you:

If you have not reviewed your coverage in 3 or more years, do so immediately. Life changes quickly and your insurance may not be adequate for your needs today. On the other hand, you may be paying for coverage that you no longer need as well.

Your liability coverage may be too low. According to Mark, the most common in the industry is \$250,000. If your base of assets has increased and you now have more to protect, or if you started out with less coverage to save money, you may want to review this with your agent. Surprisingly it can cost as little as \$50 per year to raise your liability coverage from \$100,000 to \$250,000.

Evaluate your collision coverage. Your vehicle has aged and fallen in value. Do you still need to carry collision on it? "I always ask a client the following question," says Mark, "If your vehicle were to

disappear tomorrow, could you replace it without insurance? If we are talking about a vehicle that is worth five or six thousand dollars, the answer may very well be "yes". In that case, it does not make sense to pay for the insurance. After all, collision is the 2nd most expensive insurance after liability in most areas."

Understand Full vs. Limited Tort Option. To sue or not to sue. "It is my opinion that people are giving up more than the cost savings can justify" says Mark. "More important than my opinion, however, is that people truly understand the full ramifications of their decision to give up the right to sue and make an educated choice." According to Mark, most people have never been in a position to consider suing anybody and, fortunately, never will. Therefore, it is very important to walk through some possible scenarios with your agent to be sure that you are making the right choice.

Is my conversion or lift covered? "Probably", says Mark. Most of the time, permanently affixed modifications are considered part of the vehicle and will be covered. The most important thing to do is to make sure that your insurance company knows about it. If they knew about it when they wrote your policy they most likely built the coverage into your premium. Again, a quick call to your agent can resolve any confusion. For a free quote or to speak with Mark directly, please call 609-883-2111. Mark is located at 891 Parkway Ave. Trenton, NJ 08618.

Note: Neither Accessible Vans & Mobility, nor Mark Ullmann are intending for this article to be insurance advice. Only a licensed agent who is familiar with your particular situation is in a position to give such advice. Costs that are referenced here are only for discussion purposes.

Trade-Ins, Rebates and More! Let AVM Help You Get Into an Accessible Vehicle Today

Ask Pete Zarba

Peter Zarba, Sales Manager, AVM-Bethpage, NY

"Can I use my current vehicle as a TRADE-IN on a new van?"



Great question! These days any full-service mobility dealer will be happy to discuss your trade-in options with you. Your 2003 Cadillac or your 2001 accessible Dodge can help pave the way to that new Toyota Sienna or Honda Odyssey. Whether your vehicle is accessible or not, the issue here is that your current vehicle has value that can be applied to a new van.

It is wise to consider replacing your vehicle as the mileage climbs, technology improves, selection broadens and warranties expire. A trade-in valued at twenty thousand dollars can reduce the tax on your new vehicle by over fifteen hundred dollars! As rebates, trade-in values and tax savings stack up, that new vehicle can get a lot closer to your driveway. If you are eligible for any third party assistance (i.e. VA, Vocational

Rehabilitation, Medicaid Waivers, etc.), the sooner you can trade-in your vehicle the less your out-of-pocket expense on a new van will be.

At Accessible Vans & Mobility, we not only welcome your trade-in, but we aggressively inspect it, clean and service it, and extend warranties on it for resale. For those of you that are short on funds and long on the need for accessible transportation, a pre-owned van can be a blessing. With AVM's financing (up to ten-year programs available) your AVM Sales Representative can help accommodate even the tightest of budgets.

The days of running the van into the ground, questioning its reliability and waiting four months for a replacement are fortunately long gone! With accessible transportation becoming more mainstream, we should reevaluate how we replace our vehicles. Trading in your vehicle for the latest in accessibility can be rewarding, not to mention sensible for a monetary standpoint.

If you have a question for "Ask Pete Zarba", please send Pete an e-mail at pzarba@AVMVANS.com.

[Editors Note: AVM may also be able to purchase your current vehicle outright. Some conditions do apply. Please contact an AVM Sales Representative for more information].

AVM Co-Sponsors the Mount Sinai Spinal Cord Injury Life Challenge Program Kayaking Trip in Long Beach, Long Island

On Saturday, June 30th, representatives from AVM-Bethpage, NY, joined over 35 people with disabilities, their families, therapists, friends and volunteers for the Mount Sinai Spinal Cord Injury Life Challenge Program Kayaking Trip, held in conjunction with Empire Kayaks in Island Park, NY.



The 2007 Mount Sinai Spinal Cord Injury Life Challenge Program Kayak Participants.

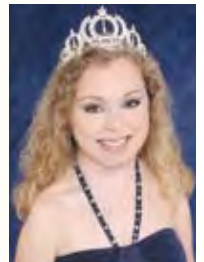
The Life Challenge Adventure is a unique program that challenges spinal cord injured outpatients with situations and obstacles that seem impossible for them because of their disabilities. The Life Challenge Program is based on the idea that when individuals confront obstacles and succeed, they become stronger, more empowered people.

By utilizing high-activity and on-the-edge leisure adventure trips (i.e. kayaking, snow-skiing, water-skiing, white water rafting, scuba diving, sky diving, and similar activities), the participants, along with family members and friends face obstacles together. Through problem solving and teamwork, success is achieved with the realization that, "If I can do this, I can do anything."

Four to eight trips are offered each year; some trips are one day long, others take multiple days over a weekend. For more information on the Life Challenge Program, please contact Jim Cesario at the Mount Sinai Spinal Cord Injury Model System at 212-659-9369 or at james.cesario@mssm.edu.

AVM is Proud to Support Ms. Wheelchair New Jersey, Kelly Rouba

Kelly Rouba, a resident of Hamilton, New Jersey and a customer of the AVM-Cinnaminson office, was recently chosen as the 2007 Ms. Wheelchair New Jersey. Kelly's personal platform as Ms. Wheelchair New Jersey focuses on improving overall awareness of disabilities among the youth of her area.



Kelly Rouba

As Ms. Wheelchair New Jersey, Kelly has visited area schools and a juvenile detention center to educate young people about various types of disabilities. She has also spoken at several conferences aimed at improving employment opportunities for individuals with disabilities.

Kelly is also a professional writer, most recently acting as a contributing writer for several local and national magazines, as well as several websites geared towards individuals with disabilities. Kelly is also currently writing a book about juvenile rheumatoid arthritis.

Additionally, Kelly acts as a freelance public relations representative. Last fall, she was honored by the NJ State Department of Labor for her outstanding work ethic and her success in the workplace both as a local journalist and a disabled woman.

Kelly is an active member of her community. She is currently serving on the planning committee for the Governor's Conference on Employment and People with Disabilities and is the chair of the Public Relations sub-committee. Moreover, she was recently selected by the New Jersey Office of Emergency Management to serve as a spokesperson for emergency preparedness issues affecting the special needs population.

Kelly has served as the publicity chair and key organizer for the Arthritis Foundation's Mercer County Arthritis Walk in April. At the walk, Assemblywoman Linda Greenstein presented Kelly with a proclamation recognizing her for her community service and journalistic efforts. AVM is proud to be one of Kelly's sponsors and supporters in her role as Ms. Wheelchair New Jersey.

For more information on the Ms. Wheelchair America program, please visit www.mswheelchairamerica.org.



The Katie Samson Foundation: Striving to Support Critical Medical Research to Cure Spinal Cord Paralysis

A star lacrosse player at Radnor High School, in Radnor, Pennsylvania, Katie Samson graduated in 1998 and went on to lead her Middlebury College Lacrosse team to a NCAA Division III Championship the following year. In January 2000, Katie suffered a severe spinal cord injury and was paralyzed from the chest down. After rehabilitation with the same determination and strength that characterized her as an athlete, Katie returned to Middlebury where she placed on the Dean's list, helped coach her lacrosse team to two championships, coached a high school all-star lacrosse team and graduated cum laude with a double major in anthropology and art history. Nominated by college friends, Katie was selected to carry the Olympic torch towards the 2002 Olympic Games in Salt Lake City. Katie completed a prestigious internship with the Philadelphia Museum of Art during the summer of 2003 and was then hired by the Rosenbach Museum to work on special projects for the collection. In Spring 2004, she coached the Radnor 8th grade lacrosse team. Katie moved to Tucson, Arizona in August 2004 to begin graduate school at the University of Arizona in Art History with a focus on photography. She joined the quad rugby team, and is enjoying new levels of independence. Katie also sits on the board of the Radnor

Educational Foundation and continues to speak publicly, educating her audience about challenges and the ability to overcome adversity.

Katie continues to perfect her "bi-ski" technique and also enjoys rowing, drama and reading. She teaches leadership skills and helps coach lacrosse in her spare time. Katie and her family have been customers of the Norristown, Pennsylvania office of AVM for many years.



Photo: Pete Bannan
Katie Samson

As the Founder of the Katie Samson Foundation, Katie strives to raise money for research to identify a cure for spinal cord injuries and organizes the lacrosse community to sponsor the annual Katie Samson Lacrosse Festival. By promoting social awareness within the community-at-large, the Festival raises critical funds for research to cure paralysis. Katie has already raised over a quarter of a million dollars for research! For more information on Katie, or the Katie Samson Foundation, please visit www.katiesamsonlaxfest.com or enter "Katie Samson Foundation" into your preferred Internet search engine.



The Pennsylvania Ventilator Assisted Children's Home Program

The Pennsylvania Ventilator Assisted Children's Home Program (VACHP) promotes high quality, cost-effective care of the ventilator assisted child in the home and supports the family in coping with this extraordinary endeavor. The VACHP is funded by the Pennsylvania Department of Health. Since 1979 the Department of Health program has provided advocacy and case management for more than 500 infants and children and their families. Families of ventilator assisted children often require the support and expertise of many different professionals.

The VACHP consists of a multidisciplinary team of a physician, pediatric nurses with respiratory critical care experience, and social workers who provide:

- Consultation and support to families and institutions who are considering home care of a ventilator assisted child
- Recommendations and advocacy to achieve effective utilization of available funding sources
- Post discharge follow-up with families including home visits, advocacy, and coordination of services
- Assessment, recommendation for improvement, and evaluation of:
 - the child's safety within the home and community
 - knowledge and skills of the child's caregivers
 - the child's clinical status, emphasizing respiratory function, nutrition and development
 - educational and community resources and psychosocial functioning of the family
 - access to and utilization of community resources such as family support services and nutritional programs
 - the child's educational program
 - opportunities for families in the program to communicate with and support each other, and
 - limited funding for respite care.

- Education - Intensive nurse training courses for nurses to achieve expertise and competency in the care of children who are dependent on technology for life at home, and national and community education via conference, hospital and school presentations to offer expertise as a resource to other organizations which serve children with complex healthcare needs.
- Transition planning - Planning and facilitating solutions for transition challenges of young adults with disabilities who are reaching adulthood.

Each team member contributes insight, support and understanding to the care of ventilator assisted children, so that the children and their families may lead as normal a life as possible.

Who is Eligible? Any child who:

- is a resident of the Commonwealth of Pennsylvania,
- requires mechanical ventilation,
- is under 21 years of age, and
- is a candidate for home care.

Children who reside in the 44 eastern and central counties receive services from the staff located in Philadelphia.

Children who reside in the 23 western counties receive services from the program staff located in Pittsburgh.

How Are Referrals Made?

Referrals are accepted from hospitals, community agencies and individual families. Inquiries about the VACHP should be directed through the main office:

Ventilator Assisted Children's Home Program Children's Anesthesiology Associates, Ltd.

100 North 20th Street, Suite 201, Philadelphia, PA 19103
Toll Free: 877-PA-VACHP / 215-977-8830 / Fax: 215-977-8228

www.kidshome-vent.org

On The Road With AVM ...



As you know, AVM strives to attend as many events/conferences/Expos throughout New York, New Jersey and Pennsylvania as possible to get the word out about the accessible mobility products and services available to you.

Your next opportunities to come out and see representatives from Accessible Vans & Mobility will be at the following:

1st Annual Bucks County Family Caregiver Expo

Treose, PA - Monday, October 8th, 2007

Delaware Women's Wellness Expo

Dover, DE - Friday, October 19th, 2007

You can always refer to AVM's website:

www.AVMVANS.com for up-to-the-minute listings of events/conferences & Expos we'll be participating in.

Please contact your local AVM for more information on upcoming events in your area.

Join AVM-Cinnaminson for their 4th Annual Open House Event This Fall!

On Saturday, September 29th, AVM-Cinnaminson will be holding their 4th Annual Open House Event. The event will run from 9:00 AM-3:30 PM, rain or shine.

As in previous years, factory representatives, as well as AVM Sales Representatives will be on-hand to demonstrate products and answer your questions.

AVM-Cinnaminson will be offering a wide variety of new and pre-owned accessible vehicles, many with special "Open House" pricing. In addition, there will be prizes, food and more!

For more information on the Open House Event, please contact AVM-Cinnaminson at **856-829-9449**.

If You Have Questions, or Need Assistance in Financing an Accessible Vehicle...
We're Here To Help!
 Please Call An AVM Sales Rep. Today!
 For the Location Nearest You, Please Refer to Our Directory on the Front Cover

Check out these vehicle specials from



Accessible Vans & MOBILITY

Please note that although each description below indicates where the vehicle is currently located, we can have the vehicle brought to a location more convenient for you if you are interested in it. Please contact an AVM Sales Representative for complete details.



NOW IN STOCK!

2007 Honda Odyssey EX

Color: Desert Rock
 Stock #: D-07-423395-N
 Vantage Northstar Conversion
 AVM Location: Norristown, PA
 Please call **800-784-8267** for more information.



\$42,295

2007 Chrysler Town & Country Touring

Color: Bright Silver
 Stock #: D-07-314958-N
 Vantage Summit Conversion
 AVM Location: Norristown, PA
 Please call **800-784-8267** for more information.



\$49,995

2007 Ford E-250

Color: Pueblo Gold
 Stock #: D-07-A01923-N
 Tuscany H.T.
 AVM Location: Norristown, PA
 Please call **800-784-8267** for more information.



\$28,995

2005 Ford E-250

Color: Blue
 Stock # U-05-A56158-N
 Tuscany H.T.
 AVM Location: Norristown, PA
 Please call **800-784-8267** for more information.



\$42,802

2006 Dodge Grand Caravan SXT

Color: Bright Silver
 Stock # D-06-886201-F
 Braun Entervan II Conversion
 AVM Location: Farmingdale, NJ
 Please call **800-221-0034** for more information.



\$45,703

2007 Dodge Grand Caravan SXT

Stock # D-07-243495-F
 AVM Location: Farmingdale, NJ
 Please call **800-221-0034** for more information.



\$46,777

2007 Chevrolet Uplander LT

Color: Gold Mist
 Stock # D-07-127429-F
 Braun Entervan II Conversion
 AVM Location: Farmingdale, NJ
 Please call **800-221-0034** for more information.



\$46,595

2006 Ford E-250

Color: True Blue
 Stock # D-06-A12325-C
 Eclipse Solar Mobility Conversion
 AVM Location: Cinnaminson, NJ
 Please call **800-850-8267** for more information.



Accessible Vans & Mobility Provides Ambulettes, Wheelchair Vans, Shuttle Vans and Buses to the Commercial Market

In addition to serving the retail market with accessible minivans and full-size vans, Accessible Vans & Mobility also provides vans and buses for



- ◆ Medical Transportation/ Ambulance Companies
- ◆ Churches & Schools
- ◆ Nursing Homes
- ◆ Assisted Living Communities
- ◆ Group Home Organizations

Accessible Vans and Mobility/Van Conversions is the leading supplier of Quality Transportation Service Vehicles in New York, New Jersey, Pennsylvania and Delaware. We ship anywhere in the continental United States.



Quality • Competitive Pricing • Value NY DOT/NJ DOH/PA-Guaranteed!
Any Other State Regulations Can Also Be Met.



Vans

Most configurations are from **\$26,000-\$32,900** depending on rebates.

Paratransit Vans and Ambulettes TYPICAL FEATURES

- ◆ Insulated Raised Roofs with FMVSS Support Cage
- ◆ Raised Side or Rear Lift Entry Doors
- ◆ Full Interior Package
- ◆ Running Boards
- ◆ High Quality Transit Flooring
- ◆ A or L Track Wheelchair Stations and Tie Downs
- ◆ Rear Heat and A/C
- ◆ Many Styles of Roofs, Custom Painting and Decals.

Shuttle Vans TYPICAL FEATURES

- ◆ Insulated Raised Roofs with FMVSS Support Cage
- ◆ Raised Side Entry Doors or Lowered Easy Entry Step, Running Boards
- ◆ 10-15 Passenger Center Aisle Seating
- ◆ Full Interior Package Standard or Luxury
- ◆ High Quality Transit Flooring Aisle with Carpet or Transit Flooring under Seats
- ◆ Cargo/Luggage Areas
- ◆ TV/DVD Players
- ◆ Custom Painting Striping and Decals



Buses

Most popular models range from **\$39,000-\$56,000** depending on rebates.

- ◆ Wheelchair Accessible and/or Shuttle Buses
- ◆ 10-25 Passengers or More
- ◆ Luggage Racks and Storage Areas
- ◆ Many Seating Options
- ◆ Basic to Luxury

Ask us about Minivans for Commercial Use Too!



Ford, GM and Sprinter Chassis Available

